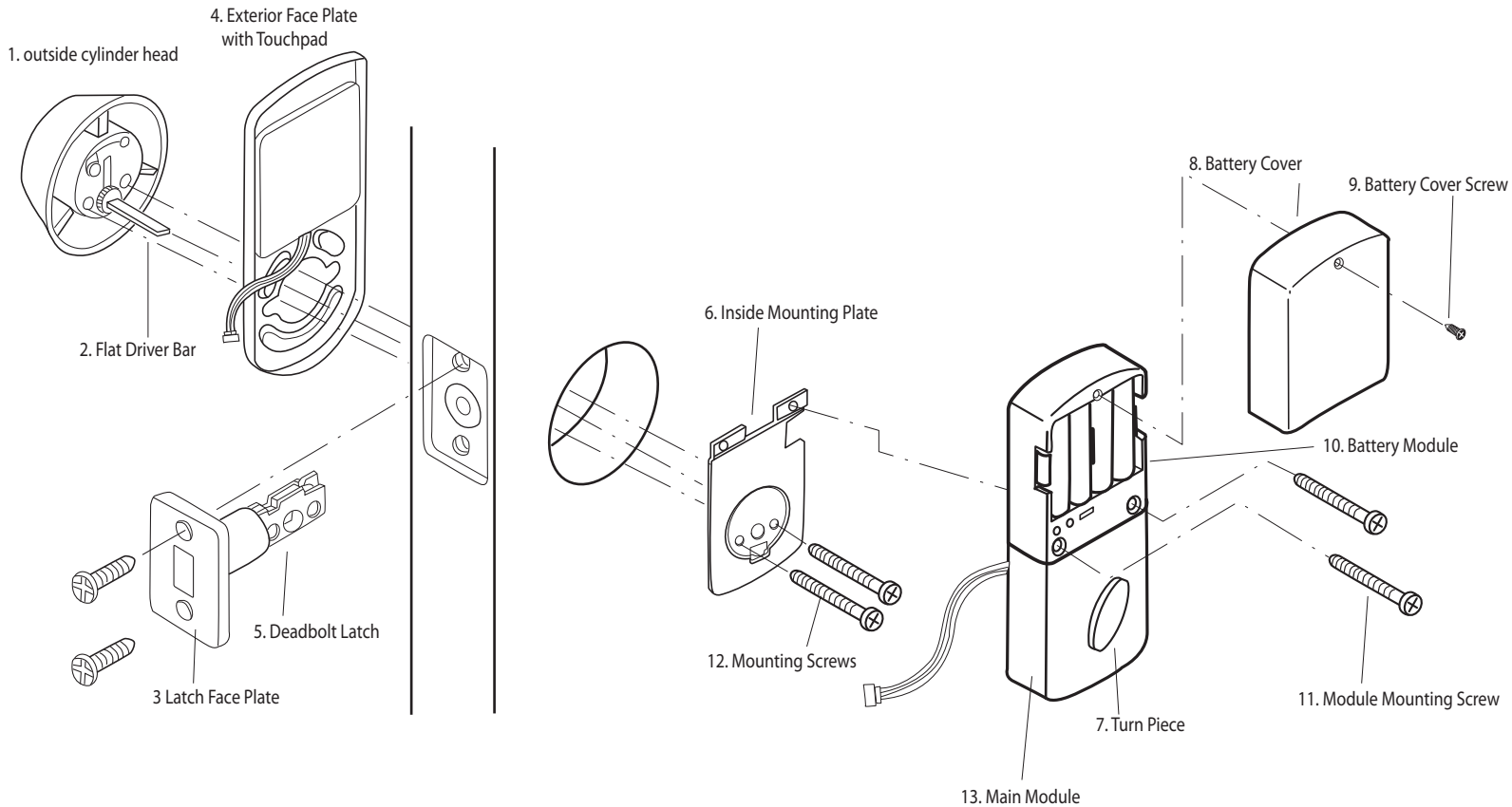


Install Instruction

Model No. PKF-01



- Place the latch (#5) in an unlocked position. Turn the Turn Piece (#7) in an Unlock position.
- Install the outside cylinder head (#1), make sure the key is not inserted in the cylinder, turn the flat driver bar (#2) toward unlock position, then insert through the cross-hole on the latch (#5) the connect to the turn piece (#7).
- Connect the wire under the deadbolt latch through the hole.
- Align the Mounting Screws (#12) through the inside mounting plate (#6), deadbolt latch (#5) and connect to the outside cylinder head (#1).
Secure the mounting screws and test for the operation by connecting the wires and attach the main module (#13).

***Deadbolt Latch Must Be Able To Operate Smoothly With Door Jamb, Strike Box, And Strike Plate, After Installation.**

